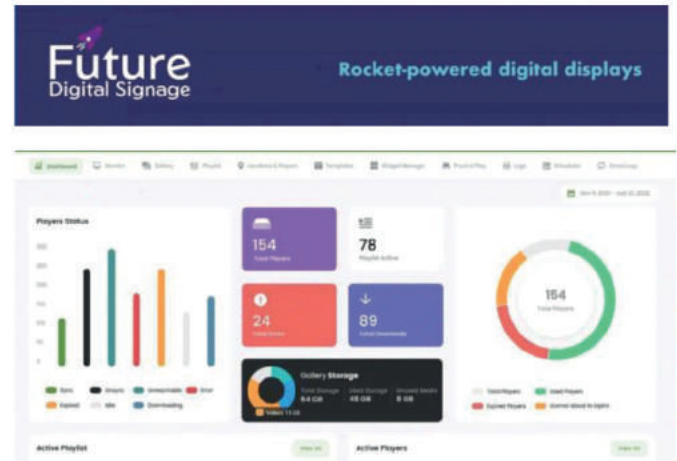


Future Digital Signage - £12.50 per month

Monthly payment by Debit Card or Direct Debit Only

1. Access FDS Service from any browser
2. Upload pictures, videos or HTML5 content
3. Create playlists and target devices
4. Manage 100's or 1000's of devices
5. Interactive Kiosk Support
6. SaaS or perpetual player licences
7. Intuitive user interface
8. User management control
9. Configurable UI (Branding)
10. Player control & monitoring
11. Media Gallery management
12. Straight forward playlist structure
13. Flexible content scheduling
14. Remote player software upgrade



Software Support & Hardware Packages



Super Premium - £24.95 per month

Cyber Secure & Remote, Hardware Support Package

1. 5 Hours Remote & Refresh Product Training
2. Same Day Acknowledgement Ticket Response
3. 24 Hours SLA, Remote Support
4. Splashtop Remote Access License
5. Mobile device management (MDM) software
6. Remote Support Monitoring (RMM)
7. 1 x Preventative maintenance PA
8. 5 x Engineer Site Visits PA, Included, Thereafter Discounted 40%



Premium Plus - £19.50 per month

Cyber Secure & Same Day Remote Support

1. 3 Hours Remote & Refresh Product Training
2. Same Day Acknowledgement Ticket Response
3. 48 Hours SLA, Remote Support
4. Splashtop Remote Access License
5. Mobile device management (MDM) software
6. Remote Support Monitoring (RMM)
7. Engineer Call out Fees Discounted 20%



Elementary - £12.50 per month

Entry Level, Same Day Remote Support

1. Initial 1 Hours Remote Product Training
2. Same Day Acknowledgement Ticket Response
3. 72 Hours SLA, Remote Support
4. Splashtop Remote Access Licence
5. Engineer Call out Fees Discounted 10%

Multi-Site Licence Discounts

Multiple Screens per Site or Volume Roll-out

- 5-10 10% Discount
- 10-50 15% Discount
- 50-100 25% Discount
- 100+ 50% Discount

Stand Alone (Hardware only)

Hardware Support - £14.95 per month

Hardware Support Package

1. Same Day Acknowledgement Ticket Response
2. 24 Hours SLA, Remote Support
3. 72 Hours Onsite Support if required (If Not Resolved Remotely)
4. 1 x Preventative maintenance PA
5. 5 x Engineer Site Visits PA, Included, Thereafter Discounted 40%

What is...

Mobile device management

Mobile device management (MDM) software allows IT administrators to control, secure and enforce policies on smartphones, tablets and other endpoints.

MDM is a core component of enterprise mobility management (EMM) and unified endpoint management (UEM), which aims to manage all endpoint devices with a single console.